

# The Three Colnes Parish Magazine

23 - 26 May

Free Admission



At Colne Engine Recreation Ground

May 2024



DAVID  
BURR

# Sales, Lettings & Managed Holiday Lets



**Bury St Edmunds**  
01284 725525  
bury@davidburr.co.uk

**Holiday Lets**  
01787 888698  
support@davidburrholidaylets.co.uk

**Long Melford**  
01787 883144  
melford@davidburr.co.uk

**Castle Hedingham**  
01787 463404  
hedingham@davidburr.co.uk

**Leavenheath**  
01206 263007  
leavenheath@davidburr.co.uk

**Newmarket**  
01638 669035  
newmarket@davidburr.co.uk

**Clare**  
01787 277811  
clare@davidburr.co.uk

**London SW1**  
0207 839 0888  
london@davidburr.co.uk

**Woolpit**  
01359 245245  
woolpit@davidburr.co.uk

davidburr.co.uk

## Contents



4. Welcome from the Editor
5. The Three Colnes Churches Contacts RideLondon via White Colne
6. Thoughts for the month;
7. Pastoral Care; Brew n' Chat  
St. Andrew's Book Club;  
Lunchtime Recital
8. May Church Services
10. Colne Engaine Festival Events
- 11-12. Earls Colne Primary School
- 14-16. Colne Engaine Primary School
- 17-19. Gardening
20. Drip by Drip by David Brown
- 23-25. Security Advice
- 27-29. Feature Article by Robin Greatorex
30. St. Andrew's Church, Colne Engaine
32. Earls Colne Library; Festival Weekend  
Earls Colne Open Gardens Event
34. Quiz Night Event
35. Film Club, Colne Engaine Village Hall
36. Aldham Old Time Rally Event
- 37-39. Up On The Allotment
- 40-41. Brick Meadows, Earls Colne  
Bingo Night Event; Community Choir
- 42-45. Going Walk About
45. Earls Colne Heritage Museum
47. Puzzle Page (answers on pg. 51)
48. 3.30 Express; Theatre III Event
49. Festival of Flowers Event
50. Halstead Choral Event
51. Art Exhibition; Ignite (Explore Faith)
52. St. Andrew's Church, Earls Colne
53. Recipe Corner - Rosemary Johnson
54. Games Night
- 56-57. Parish Councillors
59. Essex and Suffolk DaRT bus service
- 60-61. Three Colnes Village Diaries
62. Useful Numbers; Advertisers' Index;

## Editorial

### Editor: Sue Kenneally

C/O. The Vicarage, 20 Swallowfield, Earls Colne, CO6 2SW. T: 07930 372219

E:threecolnesmagazine@gmail.com

All copy should be sent to Sue.

### Design: Jonathan White

E:designthreecolnesmagazine@gmail.com

### Advertising: Terry Hawthorn

T: 01787 223140

E:adsthreecolnesmagazine@gmail.com

## Advertising

All advertising enquires to be sent to Terry

**Readers, please remember to mention this magazine if you answer any of the advertisements.**

We welcome advertising in our magazine, the income from which helps to cover production costs. This does not imply any endorsement or approval of the products and services mentioned in the advertising.

*This magazine is produced for the villagers of the Three Colnes, consisting of White Colne, Colne Engaine and Earls Colne, by St. Andrew's Parish Churches.*

## Website Addresses

[www.colnechurches.com](http://www.colnechurches.com)

[www.colne-engaine.org.uk](http://www.colne-engaine.org.uk)

[www.earlscolne-pc.gov.uk](http://www.earlscolne-pc.gov.uk)

[www.whitecolneparishcouncil.gov.uk](http://www.whitecolneparishcouncil.gov.uk)

FOR THE JUNE 2024 ISSUE PLEASE PROVIDE

SUBMISSIONS BY 6<sup>TH</sup> MAY 2024

Please provide Editorial in Word and Advertising as .jpg file

# Welcome

---



Hope you all had a great Easter, despite our up and down weather; we packed in loads, with visits to the seaside, BBQs and a few pints and a pizza down the local.

I can't wait for the summer to come. With these later evenings, I can get a few more walks in, though I seem to have been coerced into supporting my son on his dog walks and have been racking up the mileage whilst we walk the small furry ones, come rain or shine!

Like many of you we have been afflicted with the never ending cold – if anyone knows of a remedy, I am all ears, as it has been relentless for the last month or so, and I really have had enough.

Reverend Mark has asked that I put out a plea for the lady who was enquiring about her dad being in Greenhills Children's Home to contact him – 01787 220347. Thanks

The Five Bells in Colne Engaine has changed hands again – let's hope that this time it is a winner! Landlord Shane is firmly ensconced in The Lion in Earls Colne. Let's give them all the support we can (along with The Drum, Drapers and all the other local public houses and cafes!). We truly need to keep using them and keep them open.

It is the Colne Engaine Village Festival this month – I can't wait; it is always a lot of fun with loads of activities to do. If you are about, come on down and have a wander.

This month, as usual we are action packed in the magazine – our usual entries from Gary and Spud (pg. 17 and pg. 37), then an interesting article about water in Earls Colne from David Brown (pg. 20), the latest at the Brick Meadows on page 40 and an article from Robin Greator on page 27.

An intro of highlights this month! So dive in, jump to the puzzle page on page 47 and get your artichokes out and soup them up on page 53.

Happy reading!

**Sue**

---

Colne Engaine Festival Raffle tickets will be available to buy at £1 each from the festival welcome tent or the Colne Engaine Village Shop. A book of tickets will be distributed to the residents of Colne Engaine to fill in the ticket stub and drop at the village shop with your payment prior to the festival. The Prize Draw will take place at 4:30pm on Sunday 26th May at the Festival Marquee. For more tickets contact [colneengainefestival@gmail.com](mailto:colneengainefestival@gmail.com). Profits are distributed to local voluntary groups and charities

---



# The Three Colnes Churches



**For Baptisms, Weddings and Funerals:** please contact The Reverend Mark Payne on 01787 220347 or [colnesvicar@gmail.com](mailto:colnesvicar@gmail.com) 20 Swallowfield, Earls Colne, CO6 2SW.  
Reverend Sharon Quilter (Associate Priest) [revdsdq@gmail.com](mailto:revdsdq@gmail.com)

**For all other matters:** please contact the Church Wardens of the Church in question:

## **COLNE ENGAINE**

George Courtauld - 07968 496235  
[georgecourtauld@aol.com](mailto:georgecourtauld@aol.com)

**PCC Secretary:** Candy Robson

Church Warden Vacancy:

St. Andrew's Church, Colne Engaine

## **WHITE COLNE**

Mr. Christopher Chamberlain  
01787 222200 [wccw@hotmail.co.uk](mailto:wccw@hotmail.co.uk)

## **EARLS COLNE**

Mr. Ray Wood & Mrs. Helen Sherfield -  
07908 138853  
[ecchurchwardens@gmail.com](mailto:ecchurchwardens@gmail.com)

**PCC Secretary:** Caroline Smith  
[standrewearlscolne@gmail.com](mailto:standrewearlscolne@gmail.com)

**Treasurer:** Helen Brooks  
[ecpctreasurer@gmail.com](mailto:ecpctreasurer@gmail.com)



# RideLondon via White Colne



## **WHITE COLNE**

The 2024 Ford RideLondon Classique, part of the UCI Women's World Tour, will feature three unique courses across London and Essex from 24 to 26 May.

Stage One

### **Saffron Walden to Colchester, Friday 24 May 2024**

The race will be coming through Earls Colne and White Colne before turning up Station Road in Chappel towards Bures.

A1124 road closures will be in place throughout the morning but will be well advertised in advance. Visit <https://www.ridelondon.co.uk/the-classique/the-stages> for full information.

Our pop up not- for -profit café will appear on White Colne village green from 10am. It's a great spot to view the race as they come up the hill from Earls Colne to take the sweeping bend at the top of the Green. Come and enjoy a freshly cooked bacon roll, bottomless coffees and teas, plus sumptuous cakes, and scones. If you need to travel by car, arrive early and park at the hall. The café will stay at the hall if weather is unkind.

# Thoughts for the month



## Fact or Fiction?

Last month I enjoyed watching the latest in the BBC's Pilgrimage series. Pilgrimage: The Road Through North Wales, has a group of celebrities of different faiths, beliefs and none, come together for the experience of a lifetime, as they get to know each other and themselves in beautiful, yet challenging surroundings. In this series, they are walking an ancient route linking churches dedicated to early Celtic Christian saints, experiencing many highs and lows along the way.

I was amused and extremely saddened by a conversation between Spencer Matthews, formerly of Made in Chelsea fame and a confessed 'non-practising Anglican', and Eshaan Akbar, a stand-up comedian and 'lapsed Muslim'. The pilgrims had visited a church dedicated to St Winefride and a well said to have sprung up in the place where Winefride's head fell having been cut off by a spurned lover. Spencer was asking Eshaan "at what point does fiction blend into actual history" in relation to Winefride's story, as he felt it was just a story with Winefride a fictional character. Eshaan assured Spencer that Winefride was real because of the documentary evidence that she existed. The conversation then moved to Jesus. Spencer thought Jesus Christ was made up, just a fictional character. The look on Eshaan's face as he confirmed Jesus was a real person. A big deal it was for Spencer to realise, with Eshaan's assurances, that Jesus, a real person, is not disputed!!

I know many feel the way Spencer did, believing that the story of Jesus is just that, a story. The principal documentary evidence for Jesus' existence is the Bible, and if you speak to anyone who has experienced the saving grace and mercy of God in Jesus Christ, they will tell you it is more than a story. If this is a big question for you, or you think it no more than fiction, why not register for the next Alpha course where no question is too big, too small, too outrageous, or too silly.

The Road Through North Wales was a spiritual journey for all the pilgrims. They faced up to and experienced emotions they didn't expect, but also found ways to let go of some of the emotional baggage they were carrying. And they learnt a lot about themselves in the process. Not unlike the pilgrimage we all undertake on a daily basis, the pilgrimage of life. If you've never undertaken a pilgrimage before and would like a virtual taster of what it's like, though nothing beats the actual experience, I recommend tuning into one of the BBC Pilgrimage series still available on the BBC iPlayer.

No matter what challenges you may be facing on your pilgrimage of life, Jesus is real. He is alive and he loves you. Yes, you! and there is nothing you can do to make him love you less, even if you think him fact or fiction!

With love and prayers,

6 / [www.colnechurches.com](http://www.colnechurches.com)



Our Pastoral Care Team continues to serve our three villages.

You may wish to contact the team if you are bereaved, poorly, feeling low or lonely, or simply just need someone to talk to.

We are happy to support you over the phone, via Zoom or in person.

If you would like to contact the team please call our Co-Ordinator:

**Rachel Fleetwood** on 07902 363533



*St. Andrew's Book Club*



**EARLS COLNE**

St. Andrew's Book Club meets on the second Tuesday of the month - **2.00 pm** at **8 Coggeshall Road, Earls Colne.**

**This Month's Meeting:**

- **Tuesday 14th May 2024**

Our May book is *Mr. Mac and Me* by Esther Freud.

Thomas Maggs lives with his family on the Suffolk coast. His life is shaped by the seasons: fishing, farming, summer visitors, but all that Thomas longs for is adventure and the chance to go to sea. Then one day a mysterious artist arrives . . .

- **New members** are always welcome. For further details, please contact me on 01787 223843

**Margaret Hill.**

*Lunchtime Recital*



**EARLS COLNE**

The Recitals take place on the second Thursday of each month at St. Andrew's Church, Earls Colne from April to September.

We hope you will enjoy the programme we have put together this year.

Next date: **THURSDAY 9<sup>th</sup> MAY 2024**

12.15pm for a 1pm start

Folk Duo "Old Peculiar" perform a selection of Folk Music from around the British Isles.

Free Entry. Refreshments are served from 12.15 onwards.

There is Retiring Collection which helps to cover our performers' fees and for the upkeep of the Broadwood Piano.

For further information please contact:

[liz.pottinger@hotmail.co.uk](mailto:liz.pottinger@hotmail.co.uk)

# Services for May



Date	Time	Church	Service
Wed 1st	9.30am	Earls Colne	Holy Communion
	3.30pm	Colne Engaine	3:30 Express
Sun 5th	10am	Earls Colne #	Morning Worship
	10am	Colne Engaine	Morning Worship
	10am	White Colne	Holy Communion
	5pm	Earls Colne #	Ecumenical Taizé
Wed 8th	9.30am	Colne Engaine	Book of Common Prayer Holy Communion
Thurs 9th	9.30am	White Colne	Holy Communion
Sun 12th	10am	Earls Colne #	Morning Worship
	10am	Colne Engaine	Morning Worship
Wed 15th	9.30am	Earls Colne	Holy Communion
Sun 19th	10am	Earls Colne #	Holy Communion
	10am	Colne Engaine	Book of Common Prayer Mattins
	10am	White Colne	Morning Worship
	6.30pm	Earls Colne	Café Church
Wed 22nd	9.30am	Earls Colne	Holy Communion
Sun 26th	11am	Colne Engaine	Three Colnes Outdoor Morning Worship (CE Festival)
	5pm	Earls Colne #	Choral Evensong
Wed 29th	9.30am	Earls Colne	Holy Communion

# These services will be live-streamed on Zoom and, together with our Online Services, on Facebook Live. Details of our Zoom link and our Facebook Page can be found at [www.colnechurches.com/pew-news](http://www.colnechurches.com/pew-news)

In addition to the above services, at 9am on each Saturday morning you are invited to Morning Prayer on Facebook Live.



# Evening Events Festival 2024

**MAY 23**

**7 - 11 PM**

**Festival Marquee**

## **FESTIVAL QUIZ NIGHT**

**Tickets £8**

Cash prize for the winning team. Bring your own drinks and snacks. Teams: max 8 people.

**MAY 24**

**7 - 11 PM**

**Festival Marquee**

## **COUNTRY DANCE & HOG ROAST**

**Tickets £17 incl. food**

Traditional English Country Dancing with a professional caller and live band. Hog roast served by Darraline. Drinks served at Amerio's beer tent and gin bar.

**MAY 25**

**7 - 11.30 PM**

**Festival Marquee**

## **PARTY NIGHT WITH JUPITER RAY**

**Tickets £15**

Let your hair down and dance away to tunes played by Jupiter Ray supported by The AM's. Refreshments served at Amerio's beer tent & gin bar as well as Convivo burger bar.

**MAY 27**

**7:00 PM**

**Festival Marquee**

## **AN EVENING WITH THEATRE III**

**Tickets £10 via Rita Prior only**

An evening of light song and musical entertainment. Arranged by the Parish Church in aid of much funds for much needed repairs to the church. Bring your own drinks and snacks. Email: Ritaprior31@gmail.com

**TICKETS AVAILABLE NOW!**

[www.ticketsource.co.uk/colne-engaine-festival](http://www.ticketsource.co.uk/colne-engaine-festival)  
or Village Shop or call Angela Floyd on 07935 703714





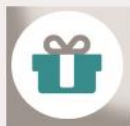
We're here to help you decide if equity release could improve your retirement finances. By releasing some of the cash from your home you could:



Pay off an existing mortgage



Clear existing credit cards and loans



Gift money to family



Make home and garden improvements

Lifetime Mortgages (also known as Equity Release) are a popular option for homeowners over the age of 55 and have made a genuine, lasting, positive difference to the lives of thousands of people in the UK, giving them the freedom of choice to make their lives easier and more comfortable.

**Call us today and let's see how we can help make a difference to your life.**

**Hoskin Financial Planning**

**08081 757434**

[help@hoskinfinancial.co.uk](mailto:help@hoskinfinancial.co.uk)

[www.hoskinlaterlifeplanning.co.uk](http://www.hoskinlaterlifeplanning.co.uk)



Equity Release may involve a lifetime mortgage, which is a loan secured against your home, reducing the value of your estate and may affect your entitlement to means tested benefits. You should always think carefully before securing a loan against your home. Unless you decide to go ahead, our service is completely free of charge as our usual advice fee of £695 is only payable on completion of a plan.

# Primary School

EARLS COLNE



We are looking for local businesses to help raise funds and sponsor the upcoming Fireworks event at Earls Colne Primary School and Nursery on November 2nd, 2024.

This event is organised by Friends of Earls Colne Primary School and Nursery and is the name of the parent and teacher association (Friends). Friends aim to fundraise to help enhance the school's facilities and enable additional trips and events for the benefit of the children, together with continuing swimming lessons at school.

Our Fireworks and Food Festival event is the biggest community event in the area and has been an annual tradition for many years. However, we are facing an ever-increasing cost in making this event happen, especially this year. We are looking for a single or several smaller sponsors to contribute to sponsoring our event. This will hopefully secure the event and raise vital funds for our school.

Your sponsorship would help us provide a memorable experience for the whole village and community while supporting a worthy school charity. It also offers the opportunity to raise the profile of your business. This might be for commercial or charitable reasons. If you want your support to be promoted, we can arrange for this to take place on promotional material and social media.

.....Cont'd /

## THE LAWNOLOGIST

### PREMIUM GRASS CARE SPECIALISTS

- ▶ Equipped for prestige larger lawns
- ▶ Bespoke seasonal treatments
- ▶ Tailored lawn care plans

01206 688425  
07539 050814

THELAWNOLOGIST.CO.UK  
INFO@THELAWNOLOGIST.CO.UK



# Primary School (Cont'd)



**EARLS COLNE**

Please let us know if this is something that interests you. We would be happy to provide further details and answer any questions and would love to talk to you. Feel free to contact us at [friendsof.ecpsandnursery@gmail.com](mailto:friendsof.ecpsandnursery@gmail.com). Alternatively, you can call us on 07824 379708.

We appreciate you taking the time to read this and hopefully look forward to hearing from you soon.



**it's not just about  
knowing the law, it's also  
about the impact we  
have on businesses and  
our communities**

For expert legal advice please call

**01206 203864**

[community@birkettlong.co.uk](mailto:community@birkettlong.co.uk)  
[birkettlong.co.uk](http://birkettlong.co.uk)  
[@birkettlong](https://twitter.com/birkettlong)



Basilidon Chelmsford  
Colchester London

**hereforgood**

**CLAIM**

Authorised and regulated by the Solicitors Regulation Authority No: 488404

# DO YOU NEED A RELIABLE ELECTRICIAN?



Considerate and tidy electrician  
with 20+ years' experience  
Fully qualified, insured and DBS checked.

**Domestic services** from new or replacement lights, switches and sockets to fuse board replacements, full rewires and more!

**Commercial services** including emergency lighting and smart lighting.

**External services** outbuilding and external power and garden lighting.

**Other services** earthing upgrades, LED lighting, electric heating install, bathroom and kitchen electrical works, central heating and smart wireless central heating systems.

**Fault finding experts**

NO JOB TOO SMALL, PLEASE GIVE SIDMAR A CALL!

 **SidmarElectrical<sup>Ltd</sup>**

Earls Colne, Colchester, Essex.

Tel: 07545 125 376 Email: [sidmarelectrical@outlook.com](mailto:sidmarelectrical@outlook.com)



## The Kindness of Community Strangers and Friends

I use the word stranger loosely as we do know many of the faces that have recently helped us here at Colne Engaine School but their wish to remain anonymous means the 'thank you' is often quieter and their support quietly shared. However, without each helping hand, we would not be able to achieve as much as we do.

Amidst the financial challenges faced by schools nationwide, this gesture of kindness at our school has shone brightly, reminding us all of the power of collective kindness and how many people are invested in the school as part of the wider community too.

Funding within school has always been tricky and our little school, nestled in the heart of the community, had been grappling with various issues ranging from outdated facilities, rooms that need painting, broken fences, and shelves all the way to a shortage of money to pay for school trips that give our children the outward facing experiences we want for them. Sometimes in small schools, these obstacles seemed insurmountable, and we are always looking for ways around funding.

**Next Generation Woodstoves**  
To comply with new efficiency & emission regulations

Colne  
Stoves  
Ltd

Earls Colne  
&  
Bury  
St Edmunds

[www.colnestoves.com](http://www.colnestoves.com)  
01787 222 608

# Primary School (Cont'd)



**COLNE ENGAINE**

Moved by a shared sense of empathy and a desire to 'make a difference', our school motto, these friends wasted no time in springing into action and I would just like to share the difference it has made.

One of the legacies set up by previous head, Julie Sarti, was to ensure we visit a diverse range of places of worship. The rising costs of transport saw a trip to the Neasden temple in London jump from £500 to £1100 just for the coach in the last two years. This made trips like this impossible. Two wonderful donations for this very purpose means we have now been able to book the trip for the summer term. Our children will now get to visit one of the most wonderful temples and take their understanding about World religions from the classroom to the real world and we can't wait!

We have had our bandstand painted by volunteers, been given planters to further develop our allotment area, had our shelves fixed by the loan of a caretaker each week, who is also helping with so many jobs; we have also had donations of Sainsbury's shopping vouchers to share with families. All of this and much more has come from the love of the community, and we are so grateful. I would like to take this opportunity to say 'Thank You' to everyone who helps Colne Engaine School each and every day.

.....Cont'd /

## The Retreat

Short Stay Self Catering Accommodation

Jean Cooper

01787 473 737

07754 692 778

Email: [info@theretreatselfcatering.co.uk](mailto:info@theretreatselfcatering.co.uk)

Web: [www.theretreatselfcatering.co.uk](http://www.theretreatselfcatering.co.uk)



Motts Garden, School Road, Little Maplestead, Halstead, Essex, CO9 2RY

# Primary School (Cont'd)



## COLNE ENGAINE

Our lovely newly painted bandstand (pictured right) and the Neasden Temple (pictured below) we are looking forward to seeing soon.



Wishing you a wonderful Summer Term

**Sam Dunne**



**Colne Engaine**  
C of E Primary School  
*Making a Difference*

**CRALIN**  
Property Services

Domestic & Commercial Maintenance/Refurbishment

**DRAINAGE**

- Blocked Drains/Toilets
- High Pressure Water Jetting
- Pipe Relining
- CCTV Camera Surveys
- New Installations
- 24hr callout

Call Craig on 07980 297068

email: [cralinpropertyservices@yahoo.com](mailto:cralinpropertyservices@yahoo.com)





# Gardening



## Hobbit's Garden

I would like to introduce you to the Hobbit's garden. The Hobbit is a nickname I use for one of my clients who lives in a country cottage out in the sticks where the only traffic is the postman's van and an occasional tractor from the nearby farm. The muntjacs, rabbits and a whole host of wildlife take advantage of the tranquillity albeit to the cost of some of the plants (a small price to pay). The brambles and ground elder present a challenge but, although small battles are won, the war is ongoing. This garden contains a huge variety of plants and, although it appears to be full, we can always make space for more, and so on a regular basis I will receive a message from her warning me that she has made another visit to the garden centre and the car is loaded up with plants. "I just couldn't resist" is a phrase I hear often. She has a little dog that is always so pleased to see me and I must admit I do like playing with her little schnauzer. Apart from regular weeding, lawn mowing and hedge trimming, the garden needs a lot of maintenance to keep it at its best. May is always a busy time as we are not expecting any more frost from the second week which gives us the green light to get all the tender bedding and vegetables planted. We like to use 'million bells' *calibrachoa* in the hanging baskets; these little beauties flower and flower and cope with .....**Cont'd /**



**CastleGENT**  
builders Ltd.



Based in Castle Hedingham, CastleGENT Builders is a small company where the personal touch is important.

We have many years experience of property refurbishment, improvements, new build and extensions to bring to your project. Working on listed buildings, including churches and domestic dwellings are a speciality.

See our web-site for examples of our work:

<http://castlegentbuilders.co.uk>

Contact Us: 07894827702

[castlegentbuilders@gmail.com](mailto:castlegentbuilders@gmail.com)

# Gardening (Cont'd)



whatever the summer throws at them. However all basket and container plants do need water at least every other day even if it has rained; if you consider that you dry your washing by hanging it outside in the air, the same principle applies with hanging baskets. Another favourite for containers is *nemesia*. This plant loves full sun and will produce masses of sweet-scented flowers from May to October; to me they smell like bubble gum (for those of you that remember what that smells like) they come in a variety of colours and, if left in the containers over winter, will often regrow the following spring. We like to encourage as many pollinators into the garden as we can, so choosing nectar rich plants with single flowers is always a priority for us (double flowers look amazing but the insects can't access the pollen so easily). We have *buddleja* and *peonies*, along with roses (*rosa*), also the free seeding *verbena bonariensis*, a drought tolerant plant that loves the gravel area of the garden with sun all day. This area is also home to pot marigold (*calendula*), another prolific self seeder. This year we are going to add some *scabious* with their blue pin cushion flowers. This is a hardy perennial that grows approximately 18" (450mm) tall and wide, the bees love it, and they also make good cut flowers for indoors. Another bedding plant good for bees is *ageratum*, growing about 8" (200mm) high and wide in a sunny spot. We will be

**JB**  
**PLUMBING & HEATING**  
OF BURES, SUFFOLK



191482

**Tel: 01787 229151 • Mob: 07818 636203**

- All Plumbing work undertaken
- Boiler Installation, Services & Repairs
- Complete Bathroom Fitting services

# Gardening (Cont'd)



contrasting the blue of these flowers with white *nemesia*. Bedding begonias (*begonia semperflorens*) are what I call 'The S.A.S' of bedding: they seem to contend with whatever weather the summer brings and will continue flowering until the first frost, perfect for containers and the front of borders. I have seen these fellas come back the following season when left undisturbed. We have two large pots which I have filled with home-made compost; these are for the sweet peas (*lathyrus odoratus*). I have pushed 4 x 47" (120cm) long canes into the compost around the edge of the pot, about 6" (15cm) apart; I then plant a single plant at the base of each cane, water them in, and then pull the tops of the canes together and tie them to create a wigwam. Then starting at the bottom I spiral garden string around the structure all the way to the top to give the plants support as they grow. On the subject of support, I check the perennials as they grow and fit plant supports around any that will become tall or top heavy with flowers. A bit of time now will save the struggle later of trying to rescue fallen and broken stems, it also helps the plants to grow more evenly and prevents them from smothering surrounding plants.

*'Laters taters'*

Keep calm and carry on weeding.

Gary

## PET PALS FIT & FED



Dog Walking &  
Animal Feeding  
Services  
For Colne Engine

Fully insured DOG WALKER  
half hour and hour slots available.  
Need your animals fed whilst you  
take a break? Let us help.

Send us a text or leave a message:

07467 079 600

07930 372 219

## PEARTREE BED & BREAKFAST

Jill & Chris warmly  
welcome you to  
their 17<sup>th</sup> Century  
cottage in  
Colne Engine.



2 double bedrooms  
plus cosy sitting room  
and private facilities.

English or Continental breakfast.

Countryside views and walks.

Also available Shepherds Hut style  
accommodation, double occupancy  
with en-suite.

T: 01787 223348

M: 07919 200646

E: [info@peartreebedandbreakfast.co.uk](mailto:info@peartreebedandbreakfast.co.uk)

[www.peartreebedandbreakfast.co.uk](http://www.peartreebedandbreakfast.co.uk)

# Drip by Drip



It may be difficult to imagine now, but households in our three parishes were relying on wells and backyard pumps for their water supply until just before the First World War. Occupants of Hunts' houses were more fortunate. They had piped water from the artesian well at the Atlas Works. By 1907 the construction of a public water main was still under discussion as the local paper reported:

**“The Vice-Chairman of the District Council said he was heartily sick of the Earls Colne Water Question that had been before them, on and off, for nearly 23 years. Young men had grown old considering it and it was time the matter was brought to an end.”**

Even so, it was another seven years before a borehole was drilled in Tey Road and local houses were connected to the mains. The pumping station fed the water tower in Coggeshall Road but, in the early days, there were frequent complaints about the poor quality of the muddy-brown water. The landlord of “The Lion” wrote to the Halstead Gazette in disgust: **“To see your customers spoiling good spirits with such water is just too bad!”**

The Coggeshall Road water tower was demolished in 1975 after Anglian Water had taken over the mains supply.

**David Brown**



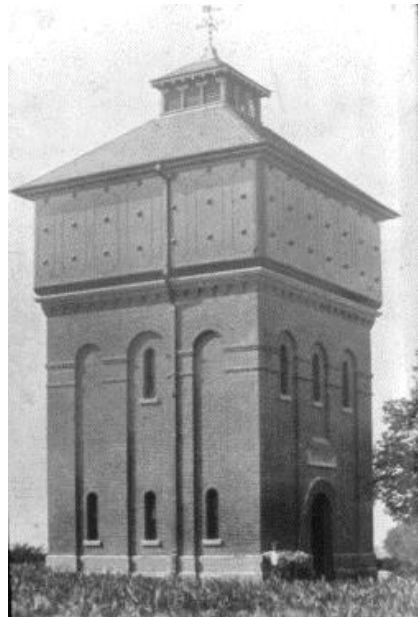
Luxury Private Hire  
Swimming Pool

for your exclusive and regular use



whites farm  
swimming pool

White Colne, Colchester CO6 2QF  
t 01787 227 064 e pool@whites-farm.co.uk  
www.whitesfarmswimmingpool.com



# BROOKS

**your search is over...  
you've found the premier transport and  
warehouse solution**

- Same Day, Next Day, Timed, Economy and Bespoke Services
- Fast Turnaround, Competitive Prices and a Friendly, Efficient Service
  - Direct Door to Door, Collection and Delivery
  - Independent Haulier, Not Part of a Hub system
- National Groupage, Part Loads, Full Loads and Specialised Movement
  - Comprehensive Warehousing, Pick and Pack Facilities
    - Racked and free-standing storage
  - State-of-the-art administrative technology

**Contact our Sales Team on:**

## **BROOKS TRANSPORT SERVICES LIMITED**

Unit 15 Second Avenue Bluebridge Industrial Estate Halstead Essex CO9 2SU

Tel 01787 476624 Email [sales@brooks-transport.co.uk](mailto:sales@brooks-transport.co.uk)

Web [www.brooks-transport.co.uk](http://www.brooks-transport.co.uk)

“A survey by Royal London Insurance revealed that 5.4 million UK residents don't know how to go about writing a Will.”

**We can help!**



**Complimentary Consultation  
with local advisor based in Earls Colne.**

*Services provided include:*

Wills, Trusts, Estate Planning, Lasting Powers of Attorney, Inheritance Tax, Protection and Insurance



**Contact: John Wilson  
Tel: 07931 158440  
Email: [john@JWW.life](mailto:john@JWW.life)  
Website: [www.JWW.life](http://www.JWW.life)**

# Daniel Robinson & Sons

*Your Local*

**Independent Family Funeral Directors**

**Incorporating Derek Holmes**

**Friendly, helpful & professional service  
at your time of need**

**Prepaid funeral planning or  
free recording of your Funeral Wishes**

**Chauffeur driven funeral fleet**

**Excellent local facilities in the heart of Halstead**

**31 High Street, Halstead, CO9 2AA**

**01787 475533**

**[www.drobinson.co.uk](http://www.drobinson.co.uk)**



# Security Advice

---

## Spring Garden Security Advice Part 2 – Sheds, Garages and Objects

We spoke last month about garden security. Now we look at the sheds, garages, and objects within them. As mentioned before, controlling access is your first line of defence and you may consider using good old gravel on paths and drives or round statues etc as an audible warning and/or a “Driveway Alert Monitor” (can be found by internet search). Sensitive and effectively placed lighting and CCTV may be considered to help protect outbuildings, ornaments, and statues but these should not be your only thoughts. Don’t forget motion activated lighting may be triggered by animals and shrubs moving in the wind.

Shed and outbuilding security: If you are installing a new shed try and find a place in view of the house and neighbours. The padlock hasp fittings of a shed should be coach-bolted to the frame and door; strengthen the fitting area with a metal plate inside and out; don’t forget the hinges and ensure they cannot be unscrewed. Cheap locks and padlocks are a poor investment; use good quality locks: look for a “Close Shackle” padlock or a key operated mortice lock to at least “Sold Secure” Silver or Gold standard. Protect windows with a wire mesh and fit a curtain or whitewash the windows to prevent prying eyes. NB some of this advice can apply to aviaries, kennels, barns, and other buildings of similar nature.

On garage doors consider adding locking bolts to both sides of an “up and over door” or a garage door defender in the ground in front of the door. Don’t forget other doors and windows in the garage; secure them as you would in a house. ....Cont’d /

## H2.NO

**Dry Organic Carpet Cleaning**

**Deep Powerful DRY Clean**

**Upholstery Cleaning also available**

**For a FREE no obligation quote  
please telephone Stephen on:**

**01787 223857 / 07793 153987**

# Security Advice (Cont'd)

LOCKS ARE A WASTE OF TIME IF YOU DO NOT LOCK THEM.

When storing larger items like motorcycles, cycles, lawn mowers etc, consider a fixing set/ ground anchor into the concrete floor, a heavy chain and again a good quality padlock to secure it. If the chain or lock is lying across the floor it could provide a surface for it to be smashed against so try and keep it tightly secured. Consider a shed alarm if you do not have one; there are shed alarms available that contact you on the phone when activated, such as [www.uwatch.co.uk](http://www.uwatch.co.uk).

Products that are fit for purpose can found by looking for the "Secured by Design" or "Sold Secure" logos, or on their websites [www.securedbydesign.com](http://www.securedbydesign.com) or [www.soldsecure.com](http://www.soldsecure.com).

Tips for Statues, ornaments, and pots:

Drill and secure with quality chain/padlock larger pots and ornaments to a secure surface.

Offenders will not want to break valuable containers- however they may still opt to lift out the plant --this is where the Plant Anchors can help.

Make the plant pot heavier with a layer of gravel at the bottom.

Some planters/pots can be marked/post-coded /etched carefully with a small Hobbyist drill or an indelible pen can work sometimes on the base.

## *JMAC INTERIORS* *Specialist Painters & Decorators* *Est. 1997*



- *All Interior and Exterior Work Undertaken*
- *Specialist in Period & Listed Properties*
- *Wallpaper Hanging to the Highest Standards*
- *Restoration of Ornate Cornices & Ceiling Roses*
- *References Available*
- *Fully Insured*

**Contact: Jeff Macdonald**  
**Tel: 07778 031505 - 01787 224674**  
**Email: [jmacinteriors@aol.com](mailto:jmacinteriors@aol.com)**  
**[www.jmac-interiors.co.uk](http://www.jmac-interiors.co.uk)**





# Security Advice (Cont'd)

Hanging baskets can be secured with chains or cable ties BUT there is a danger the offender may simply wrench from the fixing point making even greater damage.

Where possible position statues, ornaments etc in view of the house and neighbours.

Photograph more unusual ornaments with a scale rule included, and where possible ensure these ornaments are in view of a house and have good lighting. Consider using a property marking product.

Only buy plants/ornaments from a reputable source and report any suspicions to Police/ Trading Standards.

For further garden security advice see the following webpages:

[www.essex.police.uk/cp/crime-prevention/](http://www.essex.police.uk/cp/crime-prevention/)

[www.securedbydesign.com](http://www.securedbydesign.com)

[www.soldsecure.com](http://www.soldsecure.com)

[www.rhs.org.uk/advice/profile?pid=606](http://www.rhs.org.uk/advice/profile?pid=606)

Date for your diary – 31/7/24 – 4/8/24 RHS Hyde Hall Summer Flower Show; we will be there within our show garden demonstrating how plants and good garden design can help protect your home. SJAS020424

C  
U  
R  
T  
A  
I  
N  
S

B  
L  
I  
N  
D  
S

U  
P  
H  
O  
L  
S  
T  
E  
R  
Y

Inspiring gifts  
&  
stylish  
homewares

ON YOUR HIGH STREET

Tuesday- Saturday  
10 am - 5 pm

*Appointments are advised to view our  
fabric & wallpaper library*

The Old Forge, High St, Earls Colne

Ziel Design  
FOR LIVING  
25 years of beautiful homes



Ziel\_design



Ziel Earls Colne



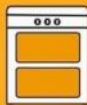
01787 222 989



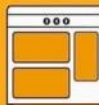
# THE OVEN CLEANERS



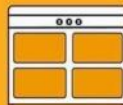
Single Oven Clean  
£55



Double Oven Clean  
£65



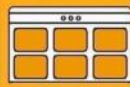
90cm Range Oven Clean  
£90



110cm Range Oven Clean  
£110



Wide Single Oven Clean  
£90



Aga/ Noble Everhot Clean  
From £100

Extras **BUY 1 GET 1 FREE**

from any of the 4 extras below.



Hob Clean  
£20



Extractor Clean  
£20



Microwave Clean  
£20



BBQ Racks  
£20

BBQ's & Air Fryers



Small BBQ  
Up to 50cm  
£50



Medium BBQ  
50-70cm  
£60



Large BBQ  
70cm +  
£75



Air Fryer  
£30

CONTACT US TO BOOK NOW

☎ 01787 743234

☎ 07834 170338

✉ info@theovencleaners.co.uk

🌐 www.theovencleaners.co.uk

# Feature Article



## Less is more, in a wordy age.

In an article in the 'I' newspaper Genevieve Roberts wrestled with how death might be explained to her children, the oldest of whom was six. The article ran to three columns with helpful input from psychotherapists, bereavement support workers and clinical psychologists, who explained that children needed to know that the death of a loved one was not their fault and that they themselves would not be abandoned. Resorting to professional help and expertise in this case seemed a bit premature as the children in the article did not appear to have had any direct experience of death, we are told, their father lost his father when he was four years old.

Much of the children's anxiety appeared to lie in the anticipation of an event that had not yet happened. The oldest even asked to buy flowers for her Nanny 'because she is going to die soon.' In an ideal world death might be best handled when it happens.

Pets have a part to play in this process. When my son was little, someone once said to me, 'Don't buy a Guinea Pig, they live too long'. We bought a hamster. When it died, I made no attempt to protect him from the sadness of the occasion and we set about the time-honoured ritual of burying the creature in the garden. We dug a nice deep hole and marked the spot. Quite instinctively, I found myself saying, 'Hammy's .....Cont'd /



GINNY JEGGO

## GINNY JEGGO

SPORTS MASSAGE THERAPIST

I am a level 3 Sports Massage Therapist and also specialise in Hot Stone & Indian Head Massage. I treat a range of people from amateur sports people of varying ability, various manual workers and professionals who spend hours working behind computers and have associated neck and back pain through poor posture. Whatever your problem there will be a massage to suit and to alleviate any pain.

[GINNYSPOORTSMASSEGE@GMAIL.COM](mailto:GINNYSPOORTSMASSEGE@GMAIL.COM) // 07792424061

# Feature Article (Cont'd)



with Jesus now.' He did not stand there demanding proof [much to my relief]; he certainly was not expecting a dissertation on the Resurrection and the Life. He accepted the comfort and reassurance based on a Christian tradition which was once an everyday part of life for many; a tradition that has provided hope both down the ages and no less in current times, for all who have found themselves in bereavement, poverty or facing existential threats.

Ms Roberts may not have been brought up in any religious tradition to help her in this matter. She could still have approached the matter with a degree of firmness. As a child I remember having anxieties that the house we lived in might go up in flames. It was a big house with open fires and a coal-fired Aga. Somehow, I had got it into my head that it might all catch fire. My mother was helped in the house by the redoubtable Mrs. Doughty who was the epitome of loving generosity, matched only by firmness when necessary. This wonderful Scottish lady was not to be messed with and had strict views on many things. The word 'toilet', for example, had no place in her vocabulary. In her presence one referred to 'the lavatory'. My anxieties about fire were met simply but

Colne  
Valley  
Groundcare



- Grasscutting • Beds and Borders • Fencing • Hedging
- Hard and Soft Landscaping • Patios • Driveways
- Mini Digger Work • Turfing • Ponds
- General Maintenance

**Contact David on 07976 554664 for a competitive quote.**

*Professional and friendly service guaranteed.*

Lower Orchard Cottage, Elms Hall Road, Colne Engaine, Colchester,  
Essex CO6 2JL Tel: 01787 220358 Mobile: 07976 554664  
david@colnevalleygroundcare.co.uk

# Feature Article (Cont'd)



firmly. Mrs. D. marched me and her son, John, who was with us at the time, outside, and we all looked up at the house. She said simply, but with complete authority, that this was a big strong house which was never going to burn down, and that was the end of the matter. I don't recall any further anxieties on the subject.

When the child in the article was wanting to buy flowers for her Nanny, she might have been persuaded to turn her attention from Nanny's perceived imminent death to her remaining life. A kind, but firm, 'Let's celebrate that she's still with us. She hasn't died yet' might have been all that was needed. In this wordy age of small print, terms, and conditions, less is more. An economy with language does not instantly equate to an economy with the truth.

**Robin Greatorex**

## **QUAKER MEETING HOUSE**

**EARLS COLNE**

**is available for hire.**

*A warm and friendly venue for leisure and educational groups, tea parties, children's parties and alcohol free events.*

**£10.00 per hour**

Sunday Meeting for Worship 10.30am

*Please call 01206 240929 for details.*

# *A. Birkin & Sons* *Funeral Directors*

*A family concern, concerned for your family  
in your time of need.*

Market End, Coggeshall, CO6 1NH

Telephone: (01376) 561316

Email: [info@abirkinandsons.com](mailto:info@abirkinandsons.com)



### St Andrews Church Colne Engaine - Dates for your diary 2024

The PCC are looking to put together events this year to raise funds for a new boiler and other work required on the church, this to include:

On 25<sup>th</sup> & 26<sup>th</sup> May over the festival weekend we will have a bottle tombola, plant stall, splat the rat and stocks (Volunteers would be welcome; if you are available to help, please let us know).

A concert with 'THEATRE III' classical crossover and songs from the musicals on Monday 27<sup>th</sup> May 6.30pm for 7.00pm in the marquee on the recreation ground. Please bring your own drinks and nibbles. Ticket price £10 per person.

Quiz Night on Saturday 29<sup>th</sup> June, tickets £8 per person. Bring your own drinks & nibbles.

Harvest Lunch on Sunday 13<sup>th</sup> October in the village hall, more details to follow.

Wine Tasting – Friday 25<sup>th</sup> October in the village hall; Tickets £20pp to include 5 tastings and some cheese & nibbles.

**Further information on events or to volunteer for helping on stalls please contact Rita Prior on 01787 736385 or email [ritaprior31@gmail.com](mailto:ritaprior31@gmail.com)**

## ESSEX AND SUFFOLK ROOFING



**ROOF REPAIRS -TRADITIONAL TILING – FLAT ROOFS  
Fascia, Soffits, Guttering – Carpentry. Cladding**

**EARLS COLNE - 01787 224496 – 07795 554442**

**[essexandsuffolkroofing@gmail.com](mailto:essexandsuffolkroofing@gmail.com)**

**David Yallop, 6 Oddcroft, Colne Engaine, CO6 2ET**



**SARALA  
COMPUTERS**

"Taking the 50 out of IT"

# WE PROVIDE COMPUTER REPAIR & UPGRADE SERVICES

Check and repair your computer  
with our experienced technicians

## Open Hours

Monday -Friday  
09:00AM - 5:00PM  
Sat  
09:30 - 12:00pm

Contact Us!

**01787 334040**

47a High Street, Halstead  
Essex C09 2JD

Learn More: <https://sarala.co.uk>

# THOMAS BEDWIN

Wedding Photography



Photographs to relive your wedding day over and over

Contact: [tjbphoto@gmail.com](mailto:tjbphoto@gmail.com)

St. Andrew's

COLNE ENGAINE



On Saturday 25<sup>th</sup> & Sunday 26<sup>th</sup> May during the Colne Engine Festival Weekend St. Andrew's Church will be having stalls at the festival.

There will be a bottle tombola, plant stall, splat the rat, and the stocks (sure to bring much hilarity).

If you have any bottles, jars of pickles, preserves etc to donate then please leave at 1 Church View (off Brook Street) Colne Engaine before 10<sup>th</sup> May 2024.

We are also looking for volunteers to assist for a couple of hours on the stalls; a rota system will be set up, so if you can spare a couple of hours on either of the days then please contact: Rita Prior on: [ritaprior31@gmail.com](mailto:ritaprior31@gmail.com) or 01787 736385

## EARLS COLNE LIBRARY

Opens Tues 9am-1pm.  
Fri 2pm-7pm.  
Sat 9am-5pm.

CLOSED Mon, Wed, Thurs & Sun.  
38 High Street, Earls Colne  
T: 0345 603 7628

Essex Libraries



at the  
heart  
of your  
community

## EARLS COLNE OPEN GARDENS

SUNDAY 23RD JUNE  
12-4.30PM

In Aid of Essex Air Ambulance &  
St Andrews Bell Tower Fund

Tickets/Map £5 per Adult  
In Advance - from Ziel & Ecolnes Refillery  
On the day - from St Andrews Church  
& Earls Colne Recreation Club

Flower Festival & Bell Tower Tours  
Refreshments at Various Locations

For Further Information  
[www.opengardens.co.uk](http://www.opengardens.co.uk)  
Call or Message Liz - 07847 003516



**TARMEC**  
&  
**CROFT**  
@gatesandfencing

- Bespoke gates,
- Hardwood or Treated softwood
- Made to measure
- Supply only or Supply and Fit
- 01787 224848



Riverside Business Park, Station Road, Earls Colne CO6 2ER



## Aerobics Classes

\*\*\* No jumping & no getting on the floor \*\*\*

Safe for joints & still a full body workout!

Mon - 9.15am - Gosfield (Maurice Rowson Hall)  
Mon - 7.15pm - Halstead Baptist Church (Upper Hall)  
Weds - 9.30am - Earls Colne Village Hall  
Thurs - 9.15am - Pebmarsh Village Hall

## Chairobics Classes

\*\*\* Fully seated aerobics workout \*\*\*

Same fun & still a workout - just sitting down!

Weds - 1.30pm - Halstead Leisure Centre (function room)  
Thurs - 1.30pm - Halstead Leisure Centre (function room)

For more information, prices, offers and to book your place  
please message/call Jenny on 07359 520 438  
email: MoveMe2music@gmail.com Facebook: MoveMe

IN AID OF  
ST ANDREW'S COLNE ENGAINE  
AT COURTAULD MEMORIAL HALL  
SATURDAY 29TH JUNE  
7PM FOR 7.30PM START

# Quiz

£8 PER PERSON

TEAMS OF 6 OR WE CAN MAKE  
UP A TEAM FOR YOU  
BRING YOUR OWN FOOD AND DRINK

TICKETS AVAILABLE THROUGH

**RITA PRIOR**

01787 736385

RITAPRIOR31@GMAIL.COM



# BRITTEN'S BITES

## BUILD YOUR BURGERS, LOAD YOUR FRIES!

5PM-9PM EVERY FRIDAY @EARLS COLNE RECREATION CLUB  
(PRE ORDERS AVAILABLE)

SATURDAY NIGHTS HOME DELIVERY IN EARLS COLNE  
AND SURROUNDING VILLAGES FROM 6PM

TEL 07949 862898 OR MESSAGE TO ORDER  
FOLLOW US ON SOCIALS FOR UPDATES!

AVAILABLE FOR PRIVATE EVENTS  
BRITTENSBITES@GMAIL.COM





As a group we never shy away from some of the most challenging topics raging in society today. This month is no different, though we are veering away from true life stories to fiction, for a change, with a film that is packed full of challenges. Might be a little uncomfortable for some, but lots to keep the discussion going for a while!

**The Film** - As good as it gets - starring Jack Nicholson and Helen Hunt

**The Discussion** - Wednesday 8th May 2024 gather at 6.45pm for a 7.00pm start

**The Where** - The Drapers, Earls Colne

For more information contact:

Sharon ([revdsdq@gmail.com](mailto:revdsdq@gmail.com)),

Kirsten ([kpt1607@icloud.com](mailto:kpt1607@icloud.com)), or

Ray ([rawood@me.com](mailto:rawood@me.com))

If you have watched a film that you feel would lead to a really good, deep, meaningful and engaging discussion, please let us know.

## Village Hall AGM 7.30pm Thursday 16th May 2024.

You are all very welcome to attend our AGM if you have any comments, ideas or criticisms of the hall or how it is used.

There could even be a free glass of wine!

The responsibilities of running the hall are quite considerable and we are about to have to spend £6,000 amazingly to update the fire detection and alarm system to keep up with all the latest Government recommendations. The cynic in me feels this is a tax collection scam as we pay VAT on all the new equipment and on the labour involved and the end result is a system that does little more than the system we already have!

**Geoff Marcoolyn**

[marcoolyngeoff@gmail.com](mailto:marcoolyngeoff@gmail.com)

Chairman Courtauld Memorial Village Hall

Tel 01787 222334 or 07776 484698

# COURTAULD MEMORIAL HALL

1 Station Road, Colne Engaine, CO6 2ES

## FOR ALL YOUR SOCIAL NEEDS

*Receptions, Discos & Dances, Children's Parties, Auctions & Fundraisers, Exhibitions, Meetings.* AMPLE CAR PARKING.

**01787 223668**

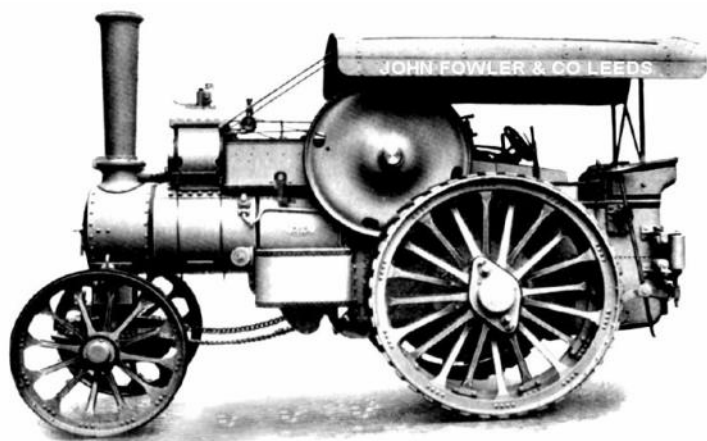
**[www.courtauldmemorialhall.co.uk](http://www.courtauldmemorialhall.co.uk)**



# **“ALDHAM”**

# **OLD TIME RALLY**

**8<sup>th</sup> - 9<sup>th</sup> JUNE 2024**



**MARKS TEY RACE COURSE C05 9EZ**

**OFF A12 SOUTH OF MARKS TEY**

**STEAM ENGINES, STATIONARY ENGINES, TRACTORS, MILITARY,  
COMMERCIALS, CLASSIC CARS AND MOTORBIKES, HORTICULTURAL  
AND LOTS MORE !!**

**RING PARADES, STALLS, CRAFTS, FUN FAIR**

**BEER TENT, REFRESHMENTS, SATURDAY AUCTION  
EVENING BAR & BAND**

**10AM - 5PM EACH DAY. ADULTS £10, AGE 5-16 £5**

***www.aldhamrally.co.uk* 07725 164772**

# Up On The Allotment



## News about Spud

It would seem that changes are afoot on the plot. After spending all last year getting my plot in order and under control I have had to reluctantly admit that time is not on my side so, instead of letting it slip back into the wilderness that it was, I have decided to hand it over to a keen young couple who will make good use of it (Bill and Ben). I will still be growing vegetables but it will be in the Hobbit's veg patch. There must be something in the air or water, or soil, because Spud has made the same decision. He will be packing up completely, as, in his words, "the old bones aren't what they used to be", so in his case you could say he has thrown in the trowel.

To follow on with the veggie theme lets look at what we will be doing on the Hobbit's veg patch.

The first early spuds are doing well in the tubs. We allow a few inches of growth to emerge and then cover with a layer of compost so the leaves are just below the surface; this is known as earthing up: this encourages longer underground stems which will produce the potatoes. We have planted some cucumber (*cucumis sativus*) 'Crystal Lemon'. They produce small round yellow fruits which are eaten like any normal cucumbers, although the Hobbit uses them in her tasty cucumber lemon .....**Cont'd /**

## Michael J Byles Plumbing & Heating

**Oil Boiler Installations  
Servicing & Maintenance  
Oftec Registered**

**General Plumbing & Heating  
work also undertaken.**

**Telephone : 01206 822 225**

**Mobile : 07717 012 433**

**E-mail : michaeljbyles@aol.com**

## THE STATION MASTER'S CAFÉ

White Colne Village Hall. Every 2<sup>nd</sup> and 4<sup>th</sup> Friday of the month.  
9am - 12.30pm

### DRINKS MENU

Teas - £1 per pot ( bottomless )

Black tea. Yorkshire decaffeinated. Green tea  
Peppermint tea. Earl Grey

Coffee - £1.50 per mug ( bottomless)

French style medium filter, decaffeinated available.

Hot chocolate - £1 per mug

Squash - 20p a glass

### FOOD MENU

Bacon Bap £1.75 Porridge 75p

Pastry/toasted tea cake+ butter +jam 50p

Cake £1.75 per slice.

Cheese scone, +butter + chutney. £1.75

Fruit scone, +butter + jam £1.75

Soup + bread roll+ butter £1.

Extra bread roll + butter 20p

Cakes & scones freshly baked by Black Horse Café, at Oliver's.  
A not for profit community café, open to all.



# Up On The Allotment



chutney. As they grow on a climbing vine We have provided support with canes, I have set the cane at a forty-five-degree angle with the plant at the base; the fruit will then get maximum light and be easier to pick. Underneath the framework we have created for the cucumbers there is space for a row of spring onions (*allium fistulosum*) because we need to use all available space on the patch. We have planted an aubergine (*solanum melongena*) which will grow up a single cane; we have covered it with fleece as we have popped it in a little earlier in the month. We have done the same with the tomatoes (*solanum lycopersicum*). This year we are growing 'Vivacious' a red plum type, 'Honeycomb' a red cherry, and 'Golden Crown' a yellow cherry variety. We also have some wild rocket (*diplotaxis tenuifolia*) and early baby carrots (*daucus carota*) in between two rows of cauliflower (*brassica oleracea*). The carrots and rocket can be harvested before the cauliflower and they don't present competition to each other. Also the fuller the ground cover with plants the more water is conserved by restricting the soil surface available for evaporation. Later in the month we will be planting peppers in large pots with a single cane to secure them; they can grow up to 3' (100cm) tall in the right spot. We will be putting them against the outside of the south facing greenhouse, where they will get the most sun. We will have to keep them well watered

## Green Glaze Windows, Doors & Conservatories Quality as standard at affordable prices

✓ comprehensive 10 year warranty ✓ free insurance backed guarantee

**FOR A FREE QUOTATION CALL 01787 274475**

or email [sales@greenglaze.co.uk](mailto:sales@greenglaze.co.uk)

**[www.greenglaze.co.uk](http://www.greenglaze.co.uk)**

Come and visit us 55 High Street, Halstead CO9 2JD



ultraframe



FENSA  
Registered Company



We are a green environmentally friendly home improvement company, committed to reducing our carbon foot print.

# Up On The Allotment



though. The varieties we are going to use are thor and solario. We will be planting the French beans (*phaseolus vulgaris*) about 6" (15cm) apart, and growing them up a framework of canes about 4' (120cm) tall. Kholrabi (*brassica oleracea*) is another crop we will plant out later in May. The plants will be 6" apart and in a shadier part of the patch as they are not keen on full sun all day and they will need plenty of water. The leaves can be eaten like any brassicas, but they are grown for the turnip like bulb for cooking. Last, but not least we will be popping some coriander (*coriandrum sativum*) into the herb garden; luckily, I will only be growing it, not eating it. I think it's a marmite thing, love it or hate it, I definitely do not love it.

'Laters taters'

Keep calm and carry on weeding.

**Gary and a retiring Spud**



**Chris Oglesby**  
Plumbing & Heating Engineer  
07971 233853  
01787 582166

- Boiler Replacements
- Central Heating Systems
- Servicing / Breakdowns
- Landlord Checks
- Plumbing Installs / Repairs



## BABY GROUP

Tuesdays 10.30am - 12.30pm

St. Andrew's Church, Earls Colne

Specifically for non-mobile babies, and their carers

Run by an NCT trained Practitioner, including short talks on specific topics:

- Sleep and routines
- Development and play
- Feeding and weaning

**Halstead, Braintree & Haverhill**

## Physiotherapy & Sports Injury Clinics

*Reduce pain  
Promote healing*

Specialising in the treatment of spine & joint problems, muscular issues, headaches, dizziness, back & neck pain.

Musculoskeletal, Vestibular & Neurological Rehabilitation from our expert practitioners.

*Evening & Saturday  
appointments available*

**01787 478789**

2 Market Hill, Halstead CO9 2AR

[www.halsteadphysiotherapyclinic.co.uk](http://www.halsteadphysiotherapyclinic.co.uk)

# Brick Meadows

## EARLS COLNE

At the time of writing, we are enjoying an explosion of lush green vibrant growth as nature welcomes some warmer weather and longer days. With the accompanying birdsong it is an exciting time of year.

In conjunction with the Four Colnes Horticultural Society (FCHS) an area of wildflower meadow is planned for the lower of the Ryefields area which adjoins the Church Hill mini roundabout. A talk by a local farmer on how to set this up drew a full house in the Foundry Lane Atlas Club with every seat taken and a dozen standing. Such interest is encouraging for the trustees and a mark of respect for the hard work of the monthly working party. The plan is to cut the meadow in strips, lightly harrow the area and then to spread wildflower hay. This hay is then agitated to release the seeds and then the "empty" hay has to be collected. The hay that will be used will be sourced from the Woodland Trust Wildflower meadow area in Fordham. These meadows themselves were set up using hay from numerous woodland trust areas in the east of England. An exciting project which, we hope, will be productive and with management be a natural asset for years to come.

**COLNE  
ENGAIN  
COMMUNITY  
CHOIR**

IF YOU LOVE  
SINGING  
WHY NOT JOIN US!

WE MEET EVERY THURSDAY  
@ 6PM  
ST ANDREWS CHURCH  
COLNE ENGAIN

AGES 5-105!  
ALL ABILITIES WELCOME



Saturday 4th May  
7pm with Eyes Down at 7.30pm  
St Andrew's Earls Colne  
£8 to enter, inclusive of tickets  
Cash Prizes  
Refreshments Available  
Tickets available on the door.

**BINGO  
NIGHT**





# Brick Meadows

## EARLS COLNE

The brush cutter purchased with the aid of a grant from our local councillor, Chris Siddall, was quickly put to use in the Anthills Field. With the wet spring weather, we are very behind schedule on getting this area cut but, weather permitting, hope to complete with it all cut and removed before the end of April. We have noticed from previous years that, by removing the growth which would otherwise enrich the soil, there has been an increase in wildflowers. Therefore, a benefit to the ants and a benefit to insects.

As far as we can see and without disturbing them, the tawny owls have shown little interest in the boxes that have been put up, but maybe next year. However, they are still active at night and, we are pleased to say, a barn owl has also been visiting the area. The barn owl is a wonderful sight to be seen "quartering" a field as dawn breaks or at dusk.

***Whilst writing can we respectfully ask all dog owners to clear up any mess left on paths or in the grass. With lighter days the number of people using the area increases and this "mess" is especially dangerous to youngsters causing, in some cases blindness as well as general unpleasantness. Mess picked up and then left in bags "strung up" on trees or thrown in the undergrowth is an abhorrent habit of a few users and a very unpleasant find for our work party. Respect for the area and for other users please.***

As we enter the summer months, general effort will all be directed on keeping paths open for walkers with brambles cut back and nettles controlled.

**Frances Barton and Jayne Meleschko**

## Steve White Electrical Services

### Part P Domestic Installer

Fully qualified, insured and guaranteed

- Extra sockets/lights
- Fuse board changes
- Power Showers
- Fault finding/repairs
- Outside power to garden/garage
- Immersion Heaters

FREE ESTIMATES

**01787 281254 or 07920 841041**

# Going Walk About



Our March walk took us from Coggeshall to Marks Hall and back, which was just over four miles for those who stopped for tea and cakes at the Orchard Kitchen. However it went up to over six miles for those who gave up the break to complete the additional circuit, down the Avenue and round the outside of the Arboretum. We had sixteen walkers and two guests from The Greenway Project, that this walk was supporting, as it followed a small part of the proposed route.

The Greenway is a project to establish a path and cycle route from Halstead, via Earls Colne, to Coggeshall, and eventually to Kelvedon. Some parts of the route already exist and just need up-grading, others are being cleared by volunteer working parties. Funding is urgently needed to support all aspects of this venture. Your donations can be made directly to Metro Bank, Account Name: Greenway North Essex, Account number: 50287564, Sort Code: 23-05-80.

If you run a business in any of those areas (or know someone who does) and wish to improve your sustainability and local environment credentials, then business partners are also being sought. If you have any questions on the Greenway Project, wish to volunteer for work parties, sponsor or partner with the project, then contact Sheila



## Colne Valley windows Your local double glazing company

*Windows, Doors, conservatories, Bi-Folding Doors, Soffits, Facias and Guttering, uPVC and Aluminium, Shop Fronts, Manual and Automatic Entrances and much more!!*



- ✓ Transferable 10 Year Insurance Backed Guarantee
- ✓ Over 30 Years Experience
- ✓ Free Quotation
- ✓ Local Family Run Business

**For your free quotation  
please call us on 01787 827382**



Website [www.colnevalleywindows.co.uk](http://www.colnevalleywindows.co.uk)  
Email: [info@colnevalleywindows.co.uk](mailto:info@colnevalleywindows.co.uk)

# Going Walk About (Cont'd)



Cook on 07972265188 or email her at [greenwaynorthessex@gmail.com](mailto:greenwaynorthessex@gmail.com) with your questions.

I'm quite nervous about our Bluebell walk in April, as they are so far advanced this year they may have finished before the walk is due. I'm writing this at the very start of April and the buds are starting to open already (the wild garlic too!). With the walk on Saturday 27th, from Fordham Heath to Hill House Woods - with optional lunch at the Cricketers pub, we will hopefully see them at their peak.

I hope many of you will have had the chance to see our more local Bluebell displays in Chalkney Woods and Bullock Wood this year. Bluebells only grow in established ..Cont'd /



Heading to Marks Hall (photo courtesy of Richard Gourlay)

**TO RESERVE YOUR CHILD'S PLACE, CALL:**  
**07907 177146**

**The BARN**  
Nursery School  
COLNE ENGAINE

## The Barn

WHERE THE EXTRAORDINARY HAPPENS EVERY DAY!



**WELCOMING CHILDREN AGED 2.5 - 5 YEARS  
PLEASE CALL FOR CURRENT AVAILABILITY**

Offering child led provision within a nurturing, stimulating, enabling environment, our children develop into confident, resilient, independent, active learners who are not afraid to take risks and face challenges head on.

AM SESSION	LUNCH	PM SESSION
9.15AM - 12.15PM	12.15PM - 12.45PM	12.45PM - 3.45PM
£21.00	£3.50	£21.00

Prices from September '24. We accept 2 year, 15 & 30 Hour Government Funded hours. Accepted subject to availability. Additional service charges will apply.

✉ [IWANTAPLACE@HOTMAIL.COM](mailto:IWANTAPLACE@HOTMAIL.COM)   [@THEBARNNURSERY.SCHOOL](https://www.facebook.com/thebarnnurseryschool)



# Welcoming New Patients

The Essex Dental Clinic is a state-of-the-art, family-friendly dental practice situated a few minutes drive from the stunning Essex Golf and Country Club. Our brand new building is light, spacious and airy, offering a warm welcome to all our patients.

## What we offer

- Implants
- Clear Aligners
- Tooth Whitening
- Hygiene
- General Dentistry
- Orthodontics
- Periodontics
- Oral Surgery
- Endodontics
- Facial Aesthetics

**CALL US TODAY ON  
01787 222828**

The Business Centre, Earls Colne Business Park,  
Essex CO6 2NS  
[www.essexdentalclinic.co.uk](http://www.essexdentalclinic.co.uk)

## Going Walk About (Cont'd)

---



or ancient woodland, and we are blessed with these woods along the banks of the Colne; just imagine, once these individual woods would have been one ancient forest along the valley, broken only by fledgling communities.

Our May walk (25th) takes us back to the Stour valley, around the picturesque countryside of Lamarsh and Alphamstone, with some great views across fields and woodland, starting from the Lamarsh Lion at ten o'clock. Please contact me on [rawood@me.com](mailto:rawood@me.com) for more information, or to get emails with details of each of our walks. You can also join our WhatsApp walking group for updates on our walks, to explore ideas for new walks, share photos and for general chat.

Enjoy your walkabouts, wherever they may take you.

**Ray Wood**

## Heritage Museum

---

**EARLS COLNE**

### Forthcoming events:

Due to increased footfall and interest in the Heritage Museum, we will now be opening Wednesday afternoons 2-4pm, as well as weekends 2-4pm.

**D-Day 80:** The Museum will be recognising the national Commemoration of the 80th Anniversary of D-Day (6th June 1944) "The largest naval air and land operation in history" with 2 talks in the Village.

**Saturday 1st June - Earls Colne in WW2, 7.00pm at the Village Hall**

**Thursday 6th June - Earls Colne in WW2, 1.30pm at the Village Hall**

Last year the WW2 talks were a sell-out with over 200 people attending. This year, the talks, with new research material and a focus on the operations conducted by the USAAF 323rd Bomber Group based at Earls Colne leading up to D-Day, are expected to be equally as popular. **£5 entrance** - Tickets now available in the Museum and early purchase is highly recommended.

**Atlas Works & Village Walks:** John Stedman Village Walk – **Sat 18<sup>th</sup> May 2.00pm – A Walk through the Village John's ever popular walks in his inimitable style, limited to 20. £5 a head.**

**Volunteers:** Would you like to volunteer at the Museum? We have roles suitable for every person - from manning the museum during opening hours, to off-site research of the Village's history from Neolithic times to the present. Please do make contact and happy to discuss. Telephone: 07979 531695 | E-mail: [info@echm.org.uk](mailto:info@echm.org.uk)



**Earls Colne**  
Heritage Museum



EST. 1951

---

**SPECIALISING IN  
PROPERTY SALES,  
LETTINGS &  
MANAGEMENT FOR  
OVER 70 YEARS**

---

**HIGH STREET, EARLS COLNE  
COLCHESTER, ESSEX CO6 2RN**

---

T: 01787 223879

E: EARLSCOLNE@PERCIVALANDCOMPANY.CO.UK

W: WWW.PERCIVALANDCOMPANY.CO.UK

# Puzzles

Letter Tiles Unscramble the tiles to reveal the message. Tiles can be used once only.

o	f	a	s	t	e	i	n	g	p	w	i	m	i	l	i	n	s	
o	u	r	l	e	n	d	t	h	a	s	t	h	o	n	e	y	e	s
a	j	b	e	g	u	s	a											

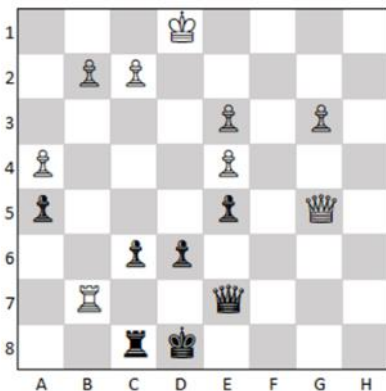
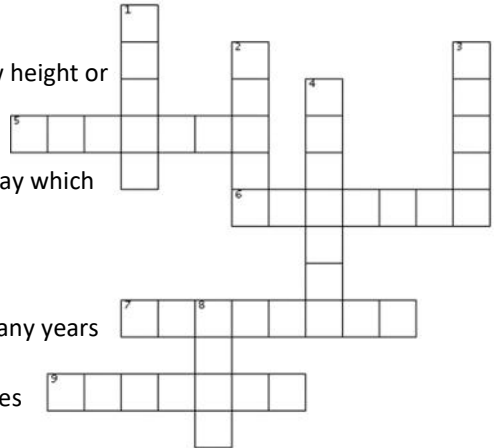
## May Crossword

ACROSS

5. .... Lines on a topographical map to show height or depth
6. Name of event when moon covers sun
7. The Chicago Cubs and Boston Red Sox play which sport?
9. .... Evacuation started on 25th May 1940

DOWN

1. Abba's Waterloo won Eurovision how many years ago
2. Marie .... who received Nobel Peace Prizes for Physics & Chemistry
3. Inspector .... From An Inspector Calls, JB Priestly
4. NZ dish created to celebrate ballerina Anna ....
8. What is the largest organ of the human body?



**Checkmate in One**

White turn to go.

Move:

To:

**All answers on page 51**

**THE 3:30 EXPRESS**  
**WEDNESDAY 1ST MAY**  
**3.30PM AT**  
**ST ANDREW'S COLNE ENGAINE**




**A 30MIN FUN & INTERACTIVE SERVICE  
 FOR CHILDREN AND THEIR FAMILIES.  
 AND AMAZING FLAPJACK!**



**THEATRE · III**  
VOCAL GROUP



**AN EVENING WITH THEATRE III**  
 7PM ON MONDAY 27TH MAY 2024  
 TICKETS £10  
 AVAILABLE FROM: [RITAPRIOR31@GMAIL.COM](mailto:RITAPRIOR31@GMAIL.COM)  
 COLNE ENGAINE RECREATION GROUND  
 BRING YOUR OWN FOOD & DRINKS



**ELECTRICAL LTD**

Fully qualified JIB Gold Card Electrician covering Bures and surrounding areas.

**HARRY Tel: 07861 764861**

**Email: [info@22electrical.com](mailto:info@22electrical.com)**

**Website: [www.22electrical.com](http://www.22electrical.com)**

**Facebook: 22 Electrical Ltd**

**Instagram: 22electricalltd**





COLNE ENGAINE FESTIVAL COMMITTEE  
PRESENTS

*Festival of*  
**FLOWERS**

23rd - 26th May

This year the Colne Engaine Festival will be celebrating the beauty of flowers. So, why not come to the festival wearing your flowery outfits, hats, shoes, accessories, anything floral!

Prize awarded for the best in show!

**SONGS FROM THE SHOWS**

**HALSTEAD  
CHORAL**

AND



Including favourites  
from Les Mis, Mary  
Poppins and Oliver

*Directed by James Davey  
Accompanist Fran Jefferies*

**Earls Colne village Hall  
Saturday June 29th 7.00pm  
£12 cash or card on the door  
BRING YOUR OWN DRINKS AND SNACKS**

**Coggeshall Art Group  
Annual Open  
ART  
EXHIBITION**

**May 25th - 27th, 2024  
10am - 5pm each day**

**New Venue:  
The Keys Room,  
Coggeshall Village Hall  
23, Stoneham St. CO6 1UH**

**ADMISSION FREE**

Supporting local charity:  
'Ending Life's Taboo'  
(reg. charity no. 1194537)

<https://coggeshallartgroup.wixsite.com/cagcogart>

**IGNITE**  
CHILL OUT, CELEBRATE & EXPLORE FAITH

**Next services:**  
26 May  
23 Jun  
28 Jul

COFFEE FROM 6.30PM  
IN ST ANDREW'S CENTRE, HALSTEAD  
LIVE MUSIC STARTS AT 7PM

 **ST ANDREW'S  
CHURCH | HALSTEAD** [www.ignitehalstead.co.uk](http://www.ignitehalstead.co.uk)

**Lambert  
Chapman**  
Chartered Accountants

**For all your accounting,  
audit & taxation needs**



CALL LUCY ORROW - 01376 326 266  
[www.lambert-chapman.co.uk](http://www.lambert-chapman.co.uk)

*Puzzle Answers*

a	j	o	u	r	n	e	y	o	f	a	t	h	o	u	s	a	n	d	
m	i	l	e	s	b	e	g	i	n	s	w	i	t	h	a	s	i	n	g
t	h	e	s	t	e	p													

1 F  
2 C  
3 G  
4 P  
5 C  
6 E  
7 O  
8 B  
9 D  
I  
U  
A  
V  
I  
L  
O  
V  
S  
E  
B  
A  
L  
L  
K  
I  
R  
K  
N

**Checkmate in One**  
Move: G5 to: E7



### FUNDRAISING FOR ST. ANDREW'S, EARLS COLNE

Hello everyone – here's your monthly reminder about what we're doing in our role to promote and raise funds for the life and work of St Andrew's, Earls Colne, for the benefit of the community. The church is important to all whether we attend services or not and we're really keen on having fun while we support the church.

Our lunchtime recital season has started – they are always really popular. Kelvedon Singers have been to church too; music sounds amazing in our church; you really should come along to one of our events.

We already have lots of events planned for 2024, the details of which are below. We'll advertise them all online and on posters in the village as they approach, but here are the dates for your diaries (all in church unless otherwise indicated):

#### **This month:**

**Saturday 4th May** Bingo night, 7pm for 7.30pm. £8 per person (includes 6 games), there'll be cash prizes and refreshments available. Come along, you can pay on the door.

**Thursday 9th May** Lunchtime recital, 1pm-1.30pm. Free entry, refreshments served from 12 noon or you can bring your own lunch. There will be a retiring collection.

#### **Upcoming:**

Thursday 13th June Lunchtime recital

Sat/Sun 22nd-23rd June Flower Festival with Tower Tours

Saturday 6th July Bingo night

Sunday 14th July Cream Tea

Thursday 18th July Lunchtime recital

We still have to find a date for our quiz night – that tells you how busy we are! We're also planning a Vintage Fashion Show and a Music Night – watch out for those dates in future magazines. Obviously, we do have regular church services too – we're a friendly bunch of people, come along, and stay for coffee afterwards.

Each month in this magazine we'll have more details about upcoming and future events, so keep an eye out for these articles. For the moment, hold the above dates and we'll keep you updated. It's going to be a busy year...

We look forward to seeing you at some or all of these events – and of course if you'd like to come to a service, we'd love that too. All the services in all our Three Colnes churches are listed in this magazine.

If you would like more information about anything we're up to, or you have suggestions for events, or if you want to join our fundraising group, you can drop an email to [ecstandrewsfundraising@gmail.com](mailto:ecstandrewsfundraising@gmail.com) or post a message via the link on our Facebook page: <https://www.facebook.com/3Colnes.HalsteadAreaTeam> Join us, it's already another year of fun! **Doug McKenzie**

# Recipe Corner

---



## Jerusalem Artichoke Soup

'Tis the season for Jerusalem artichokes. Jerusalem artichokes are nothing like globe artichokes, look like misshapen potatoes and certainly not from Jerusalem. They are actually related to the sunflower and get their name from the Italian word for sunflower (*girasole*). Artichokes are ugly and fiddly to prepare because of their shape, but worth it.

This is another recipe in which I use the water preserved after cooking other vegetables.

### Method

- Place the artichokes in a bowl of water and peel. You will need to cut into crevices to wash/cut out the mud which lingers in there. Dice the peeled artichokes into small pieces.
- Peel the carrots and potatoes and dice into small pieces.
- Heat the oil in a large pan.
- When hot, add the vegetables and fry lightly.
- Add the vegetable water and stir.
- Add salt and pepper, lemon juice and the vegetable stock cube and stir again.
- Cook until vegetables soft. Add chopped fresh herbs as you finish cooking.
- Liquidise using a blender... and serve hot.

---

### Ingredients

*2 1lb (500 grams) Jerusalem artichokes.*

*6oz (170 grams) Carrots*

*4ozs (113 grams) Potatoes*

*1 Vegetable stock cube*

*Salt and pepper*

*Juice of half a lemon*

*2 tablespoons of chopped fresh herbs.*

*About 1 pint (500ml) of water preserved after cooking other vegetables*

*Oil for cooking.*

*About 1 pint (500ml) of water preserved after cooking other vegetables*

*Oil for cooking*

---

## Rosemary Salmon



# FOOTPRINTS — BEAUTY —

**Footprints Beauty** in Earls Colne offers treatments by a fully qualified therapist with 20 years plus experience, using top quality products.

Specialising in Guinot facials, intimate waxing for women using hot wax, all types of strip waxing, manicures, pedicures, back cleanse, lash & brow tint.....and a few more!

Set in a be-spoke, cosy salon where comfort and relaxation is a priority!

Tel: **07957 211708**

Email: [footprintsbeauty@hotmail.com](mailto:footprintsbeauty@hotmail.com)

Web: [www.footprintsbeauty.co.uk](http://www.footprintsbeauty.co.uk)

## GAMES NIGHT



**1ST FRIDAY OF THE MONTH  
FROM MARCH  
6 - 8PM**  
ST ANDREW'S EARLS COLNE  
EVERYONE WELCOME  
REFRESHMENTS AVAILABLE  
**FREE OF CHARGE**  
DONATIONS WELCOME

**H&M INTERIORS**  
FINE BESPOKE FURNITURE



01787 224129 [www.handminteriors.com](http://www.handminteriors.com)

Unit One, Colne House Farm, Station Road, Earls Colne, CO6 2LT



### Need some help around the house or garden?

From regular gardening to that indoor job you never get around to, I could be what you're looking for. With skills in house and garden maintenance.

**Call or text me for a chat  
about your needs.**

**Graham King**  
**T: 07923 445128**



**DIRECT MAIL**  
& CAMPAIGNS



**PRINTING**  
& DESIGN



**PROMOTIONAL**  
PRODUCTS

R ENVELOPE INSERTION POSTERS BRANDED CLOTHING DOOR TO DOOR  
NS FULFILMENT BROCHURES EXHIBITION STATIONERY LEAFLETS  
BANNER STANDS LEAFLETS BRANDED PENS AND MUCH MORE...



**CONTACT US TODAY**

No matter the size of your requirements, we are equipped to assist you.

01255 221322

[hello@thedsgroup.co.uk](mailto:hello@thedsgroup.co.uk)

[thedsgroup.co.uk](http://thedsgroup.co.uk)





Members of the Village's Parish Councils work hard to ensure that the Three Colnes remain a beautiful and tranquil place to live. If you have any comments or suggestions, please feel free to contact them.

---

## **COLNE ENGAINE**

### **CLLR ALAN BARNARD**

(Chairman) [alan@colne-engaine.org.uk](mailto:alan@colne-engaine.org.uk)  
EALC REPRESENTATIVE; TOWNLANDS TRUST;  
BURCHES MEADOW LIAISON; SEXTON'S FIELD  
TRUSTEE; FUNDING FOR VILLAGE PROJECTS  
DEFRIBRILLATOR WARDEN

### **CLLR TERRY FLOYD**

[terry@colne-engaine.org.uk](mailto:terry@colne-engaine.org.uk)  
TREE WARDEN; FOOTPATHS; TOWNLANDS  
TRUST; SEXTON'S FIELD TRUSTEE

### **HELEN BISCOE-DAVIS**

[helen@colne-engaine.org.uk](mailto:helen@colne-engaine.org.uk)  
COMMUNITY ENGAGEMENT

**GRAHAME WALKINGSHAW** - 01206 240772

### **PARISH CLERK & FINANCIAL OFFICER**

[clerk@colne-engaine.org.uk](mailto:clerk@colne-engaine.org.uk)

### **CLLR SARAH DIGNASSE**

(Vice Chair) [sarah@colne-engaine.org.uk](mailto:sarah@colne-engaine.org.uk)  
RECREATION GROUND; VILLAGE SCHOOL;  
VILLAGE HALL LIAISON

### **CLLR NIGEL WARWICK**

[nigel@colne-engaine.org.uk](mailto:nigel@colne-engaine.org.uk)  
FINANCE COMMITTEE; BURCHES MEADOW  
LIAISON; FESTIVAL LIAISON

### **CLLR IAN MESSENGER**

[ian@colne-engaine.org.uk](mailto:ian@colne-engaine.org.uk)  
FINANCE COMMITTEE; FUNDING FOR  
VILLAGE PROJECTS; WEBSITE, I.T., AND  
ARCHIVE LIAISON

### **CLLR PAT TAYLOR**

[pat@colne-engaine.org.uk](mailto:pat@colne-engaine.org.uk)  
EALC REPRESENTATIVE; TREE WARDEN

**DOWNLOAD THE LATEST PARISH COUNCIL NOTES FROM:**

**[WWW.COLNE-ENGAINE.ORG.UK/MEETINGS](http://WWW.COLNE-ENGAINE.ORG.UK/MEETINGS)**

---

## **ESSEX COUNTY COUNCILLORS**

County Councillor Chris Siddall  
[cllr.chris.siddall@essex.gov.uk](mailto:cllr.chris.siddall@essex.gov.uk)

District Councillor Gabrielle Spray  
[cllr.gspray@braintree.gov.uk](mailto:cllr.gspray@braintree.gov.uk)

District Councillor George Courtauld  
[cllr.gcourtauld@braintree.gov.uk](mailto:cllr.gcourtauld@braintree.gov.uk)

MP for Braintree James Cleverly  
[james.cleverly.mp@parliament.uk](mailto:james.cleverly.mp@parliament.uk)

---

To contact your councillors in Earls Colne, visit their website: <https://www.earlscolne-pc.gov.uk/> and click on the Parish Council tab and select councillors. Currently two vacancies exist, could one of them be filled by you? Please contact the Parish Clerk.





## EARLS COLNE

All Members are jointly responsible for Village Environment and Planning

**NIKKI SPELLING** is the Chair

[nicola.spelling@earlscolne-pc.gov.uk](mailto:nicola.spelling@earlscolne-pc.gov.uk)

**TONY CALTON** is Vice Chair and responsible for Neighbourhood Plan and Planning Applications

[tony.calton@earlscolne-pc.gov.uk](mailto:tony.calton@earlscolne-pc.gov.uk)

**JACKIE PARISH** is responsible for the Village Hall [jackie.parish@earlscolne-pc.gov.uk](mailto:jackie.parish@earlscolne-pc.gov.uk)

**NIK MCKEAN** is responsible for the Village Hall

[nik.mckean@earlscolne-pc.gov.uk](mailto:nik.mckean@earlscolne-pc.gov.uk)

**KATY KERSLAKE** is responsible for Communications

[katy.kerslake@earlscolne-pc.gov.uk](mailto:katy.kerslake@earlscolne-pc.gov.uk)

**RAY RANNS** is responsible for Finance/Asset Management [ray.ranns@earlscolne-pc.gov.uk](mailto:ray.ranns@earlscolne-pc.gov.uk)

**JONATHAN HAPPS** – More details of responsibilities to follow

[jonathan.happs@earlscolne-pc.gov.uk](mailto:jonathan.happs@earlscolne-pc.gov.uk)

**JUNE JEMMETT** is responsible for Finance/Asset Management

[june.jemmett@earlscolne-pc.gov.uk](mailto:june.jemmett@earlscolne-pc.gov.uk)

**LORRAINE BAUCKHAM-LEYS** is responsible for Communications [lorraine.bauckham-leys@earlscolne-pc.gov.uk](mailto:lorraine.bauckham-leys@earlscolne-pc.gov.uk)

**DEE ELLISON** – is the Parish Clerk

[clerk@earlscolne-pc.gov.uk](mailto:clerk@earlscolne-pc.gov.uk)

**ELEANOR FITCH** – is the Asst. Parish Clerk

[village.hall@earlscolne-pc.gov.uk](mailto:village.hall@earlscolne-pc.gov.uk)

*Two Councillor vacancies exist at the time of writing. Contact the Parish Clerk.*

## WHITE COLNE

[www.whitecolneparishcouncil.gov.uk](http://www.whitecolneparishcouncil.gov.uk)

**Cllr. Jane Taylor**— 07521 312778

[chair@whitecolneparishcouncil.gov.uk](mailto:chair@whitecolneparishcouncil.gov.uk)

(Chairman) BALC executive; climate action, community energy ,community liaison, grant funding, village hall – managing and estate

**Cllr. James Bond** is Vice chair .

[Cllr.jbond@whitecolneparishcouncil.gov.uk](mailto:Cllr.jbond@whitecolneparishcouncil.gov.uk)

Highways, village green, village hall estate.

**Cllr. Paul Batchford**

[Cllr.pbatchford@whitecolneparishcouncil.gov.uk](mailto:Cllr.pbatchford@whitecolneparishcouncil.gov.uk)

Environment ( includes footpaths) meadows, river (includes flooding)

**Cllr. Denise Drizen**

[Cllr.ddrizen@whitecolneparishcouncil.gov.uk](mailto:Cllr.ddrizen@whitecolneparishcouncil.gov.uk)

Allotments,defibrillator, village hall estate.

**Cllr. Kris Bell**

[Cllr.kbell@whitecolneparishcouncil.gov.uk](mailto:Cllr.kbell@whitecolneparishcouncil.gov.uk)

Defibrillator, web site and I.T, village hall estate.

**Cllr.John Brace**

[Cllr.jbrace@whitecolneparishcouncil.gov.uk](mailto:Cllr.jbrace@whitecolneparishcouncil.gov.uk)

Highways, planning, policies, community garden

**Cllr.John Wilson**

[Cllr.jwilson@whitecolneparishcouncil.gov.uk](mailto:Cllr.jwilson@whitecolneparishcouncil.gov.uk)

Allotments, environment, planning, policies, river.

**Petra Palfreyman** is Parish Clerk and

financial officer— 07876 198748

[clerk@whitecolneparishcouncil.gov.uk](mailto:clerk@whitecolneparishcouncil.gov.uk)

# Tree Surgeon



Blake Tree Care 

*Providing excellence in:*

- Tree Felling
- Canopy Reduction
- Hedge Cutting
- Garden Clearance
- Tree Shaping and Pruning
- Stump Grinding
- Pollarding
- Emergency Tree Work

*Free Consultation for Small and Large Jobs*

*Public Liability Insurance*

**M: 07515288736**

**O: 01787 228341**

**info@blaketreecare.co.uk**

**www.blaketreecare.co.uk**



*"A very competitive price and a VERY tidy job" ★★★★★*

## About this bus service

Demand Responsive Transport (DaRT) is an alternative way of providing access to key services in rural areas.

Instead of using fixed routes with fixed stops and times, DaRT customers book journeys with the operator in advance and are picked up from an agreed point – often their own home, a bus stop or local place of interest. You can use it:

- to go shopping
- attend a health appointment
- get to/from work, school or college
- visit friends

Arrow Taxis Essex Ltd will also need to know:

- Your name
- Your telephone number
- Any specific requirements, such as if you are a wheelchair user or if you have difficulty walking

### Return journey

It is advisable to book your return journey at the same time of your initial booking otherwise you will need to give 2 hours' notice for your return journey.

**Remember to be ready when you are due to be collected.**

This service is funded by Essex County Council and operated by Arrow Taxis.



**Essex and Suffolk  
DaRT**  
01621 874411



### When does it operate?

DaRT 3 operates between 0600 and 2000, Monday to Saturday. Unlike a bus service there is no set route and timetable.



### How much will it cost?

	Adult (age 16 or over)		Child (age 5 to age 15 inclusive)	
Distance	Single	Return	Single	Return
Less than 2 miles	£2.50	£3.50	£1.50	£2.00
Between 2 and 5 miles	£4.50	£6.50	£2.50	£3.50
More than 5 miles	£5.50	£8.00	£3.00	£4.50

**Concessionary pass holders – valid after 0900 Monday to Friday and all day Saturday**



### How do I book a journey?

Telephone Essex and Suffolk DaRT on 01621 874411 and explain:

- Where you would like to go
- Where you would like to be collected from
- What time you need to go (please give at least 2 hours notice before travelling)



### How can I pay?

You can pay on the bus or by debit/credit card over the telephone.

### DaRT 3 covers the parishes of:

Alphamstone	Ashen	Belchamp Otten	Belchamp St. Paul	Belchamp Walter
Birdbrook	Borley	Bulmer	Bures Hamlet	Colne Engaine
Earls Colne	Foxearth	Great Henny	Great Yeldham	Greenstead Green
Halstead Town	Lamarsh	Liston	Little Henny	Little Yeldham
Middleton	Ovington	Pebmarsh	Pentlow	Ridgewell
Stambourne	Steeple Bumpstead		Tilbury Juxta Clare	Toppesfield
Twinstead	Wickham St. Paul	White Colne		

# The Three Colnes Diary



## COLNE ENGAINE

## WHITE COLNE

1	Wed	3.30 Express 3.30pm (p.48)	
2	Thu	Brew n' Chat 2pm (p.7); Community Choir 6pm (p.40)	White Colne Sewing Bees 7.30pm (p.57)
3	Fri		
4	Sat		
5	Sun		
6	Mon	COPY DEADLINE FOR MAY ISSUE	COPY DEADLINE FOR MAY ISSUE
7	Tue		
8	Wed		
9	Thu	Brew n' Chat 2pm (p.7); Community Choir 6pm (p.40)	White Colne Sewing Bees 7.30pm (p.57)
10	Fri		White Colne Stationmasters Community Café 9am (p.29)
11	Sat		
12	Sun		
13	Mon		
14	Tue		
15	Wed		
16	Thu	Brew n' Chat 2pm (p.7); Community Choir 6pm (p.40); Village Hall AGM (p.35)	White Colne Sewing Bees 7.30pm (p.57)
17	Fri		
18	Sat		
19	Sun		
20	Mon		
21	Tue		AGM of the Parish Council 7.30pm
22	Wed		
23	Thu	COLNE ENGAINE FESTIVAL EVENT (p.9); Brew n' Chat 2pm (p.7); Community Choir 6pm (p.40)	White Colne Sewing Bees 7.30pm (p.57)
24	Fri	COLNE ENGAINE FESTIVAL EVENT (p.9)	RideLondon Event (p. 5); White Colne Stationmasters Community Café 9am (p.29)
25	Sat	COLNE ENGAINE FESTIVAL WEEKEND	
26	Sun	COLNE ENGAINE FESTIVAL WEEKEND	
27	Mon	COLNE ENGAINE FESTIVAL EVENT (p.9)	
28	Tue		
29	Wed		
30	Thu	Brew n' Chat 2pm (p.7); Community Choir 6pm (p.40)	White Colne Sewing Bees 7.30pm (p.57)
31	Fri		

# The Three Colnes Diary

0000000

25

## EARLS COLNE

1	Wed	Brew n' Chat, Earls Colne 2pm (p.7)
2	Thu	
3	Fri	Games Night 6pm (p.54)
4	Sat	Bingo Night 7pm (p.40)
5	Sun	
6	Mon	COPY DEADLINE FOR MAY ISSUE;
7	Tue	
8	Wed	Brew n' Chat, Earls Colne 2pm (p.7); Film Club 6.45pm (p.35)
9	Thu	Lunchtime Recital 12.15pm (p.7)
10	Fri	
11	Sat	
12	Sun	
13	Mon	
14	Tue	St. Andrew's Book Club Meeting: 2pm at 8 Coggeshall Road, Earls Colne (p.7)
15	Wed	Brew n' Chat, Earls Colne 2pm (p.7)
16	Thu	
17	Fri	
18	Sat	Heritage Museum Event 2pm (p.45)
19	Sun	Café Church 6pm (p.8)
20	Mon	
21	Tue	
22	Wed	Brew n' Chat, Earls Colne 2pm (p.7); Annual Parochial Church Meeting 7.30pm (p.25)
23	Thu	
24	Fri	
25	Sat	Going Walk About (p.42)
26	Sun	
27	Mon	
28	Tue	
29	Wed	Brew n' Chat, Earls Colne 2pm (p.7)
30	Thu	
31	Fri	

## Useful Numbers

---

### Councils

Braintree District Council 01376 552525  
Colchester Borough Council 01206 282222

### Doctors

The Elizabeth Courtauld Surgery, Halstead  
01787 475944  
The Pump House Surgery, Earls Colne  
01787 222022

### Schools

Colne Engaine C of E (Aided) Primary School  
01787 222717  
Earls Colne Primary School & Nursery  
01787 222205  
Honywood Community Science School,  
Coggeshall 01376 561231  
The Ramsey Academy 01787 472481

### Essex Police

Braintree Police Station 0300 333 4444

### Village Amenities

Colne Engaine Village Hall 01787 223668  
Earls Colne Village Hall 01787 224370  
White Colne Village Hall 07585 558047  
Colne Engaine Village Shop and Post Office:  
01787 220163  
White Colne Village Market 07870 652321

### Village Groups

Colne Engaine Village Archive 01787 222080

### Youth Groups

1st Earls Colne Brownies 01787 224175  
1st Earls Colne Girl Guides 01787 220065  
1st Earls Colne Rainbows 01787 224913  
Scouts [www.scouts.org.uk](http://www.scouts.org.uk)

If you are an officer of a club or group in one of the Three Colne Villages and would like to place information about the group's activities and events in the magazine for free, please contact the Editor (pg. 2).

## Advertisers Index

Accountants	51
Baby Group	39
Beauty Treatments	54
Bed & Breakfast	19
Building Company	17
Café & Mobile Food Trailer	34, 37
Carpet Cleaning	23
Computer Services	31
Courtauld Hall	35
Dental Clinic	44
Dog Walking	19
Double Glazing	38, 42
Drainage	16
Eco Refill Store	64
Electrician	13, 41, 48
Estate / Letting Agent	2, 46, 63
Fencing & Gates	33
Exercise Classes	34
Financial Planning	10, 21
Fireplaces & Woodstoves	14
Funeral Directors	22, 29
Garden Services	28
Handyperson Services	54
Interior Design	25, 54
Lawn Care Specialist	11
Mobile Phone Repairs	31
Nursery School	43
Oven Cleaning	26
Painting and Decorating	24
Physiotherapy	39
Plumbing / Heating	18, 37, 39
Printing Company	55
Quaker Meeting House Hire	29
Roofing	30
Self Catering Accommodation	15
Solicitors	12
Sports Massage Therapist	27
Swimming Pool Hire	20
Tablet Repairs	31
Transport Company	21
Tree Surgeon	58
Wedding Photography	32



# HERITAGE

Free Market Appraisals

Sales & Letting Agent  
54 High Street  
Earls Colne  
CO6 2PB  
01787 722000

[www.essexheritage.co.uk](http://www.essexheritage.co.uk)



# ECOLNES

• R E F I L L E R Y •

75 HIGH STREET, EARLS COLNE

## Problem

Health & Beauty and Home & Cleaning products are usually sold in non-biodegradable plastics which are often thrown away



## Solution

Reuse your existing containers by refilling them and save them from landfill

Bring this magazine with you to receive 5% discount off your first refill

